

DRY WEIGHT: 620kg

TYPICAL EXAMPLE ONLY, RATING AND OPTIONS ATTACHED
MAY CHANGE OVERALL DIMENSIONS.

D.WOOD		00	M.BLEAKLEY	23.10.23		E44
CHECKED BY	DATE	ISSUE	DESIGNER	DATE	JOB NO	ENGINE



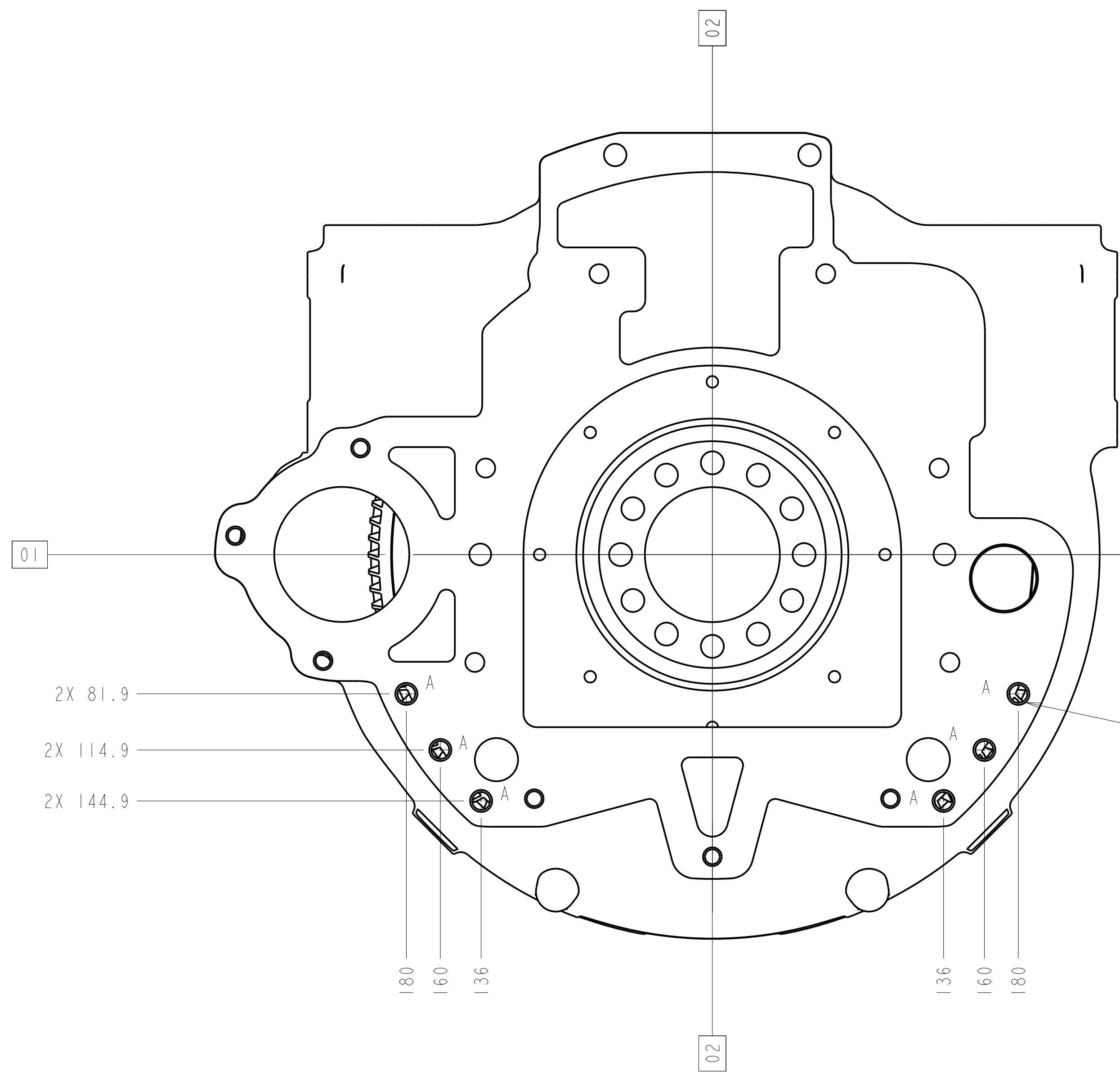
Perkins Engines Company Limited
ALL RIGHTS RESERVED
THIS DOCUMENT CONTAINS CONFIDENTIAL INFORMATION
WHICH MUST NOT BE COPIED WHOLLY OR IN PART, NOR
DISCLOSED TO ANY PERSON WITHOUT OUR PRIOR
AUTHORITY IN WRITING.
© PERKINS ENGINES COMPANY LIMITED

AO THIRD ANGLE

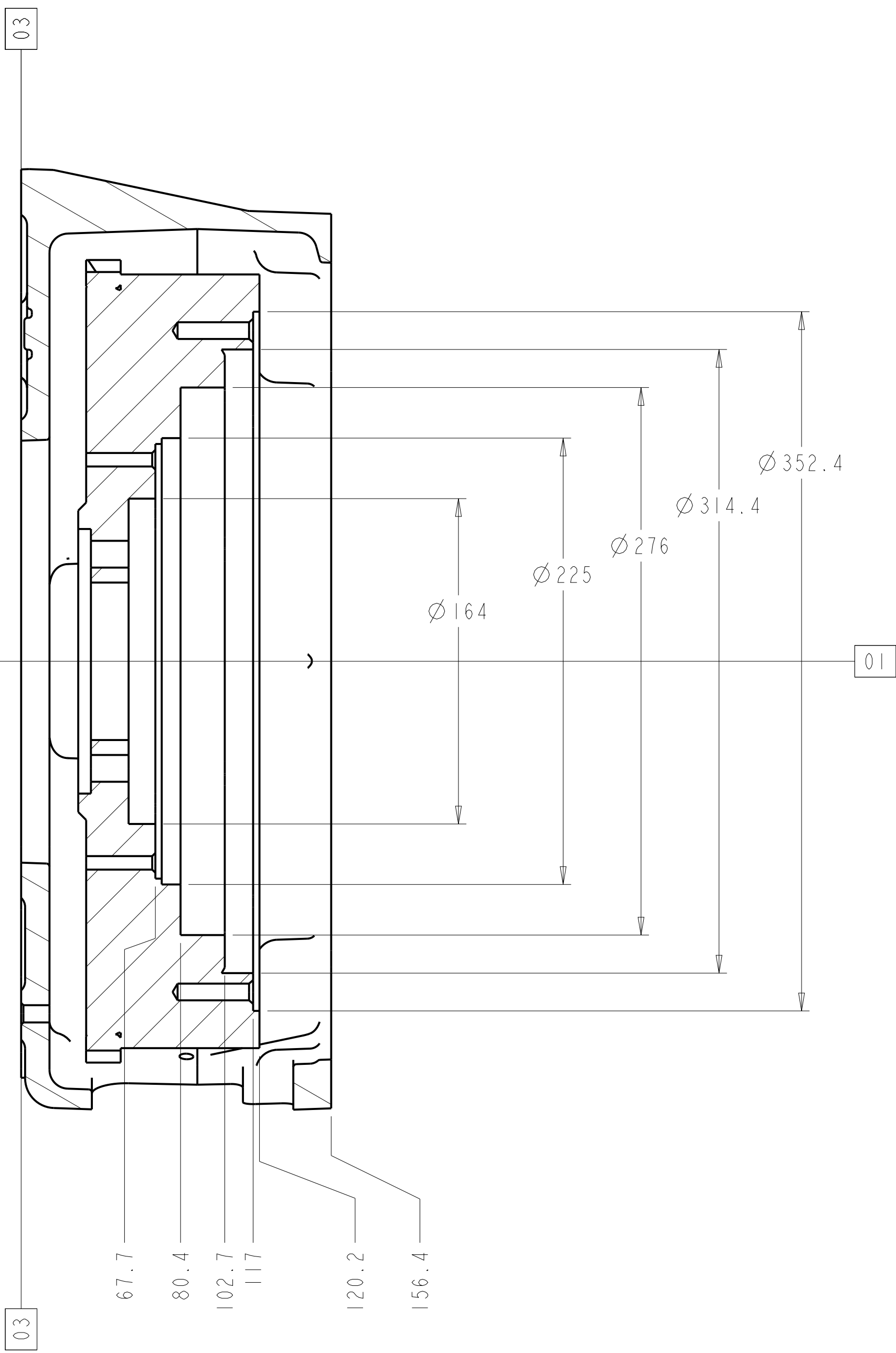
INSTALLATION-ENG
E44 HEX T

SCHEME No 6468386

Scale : 1:5 Sheet : 1 of 2



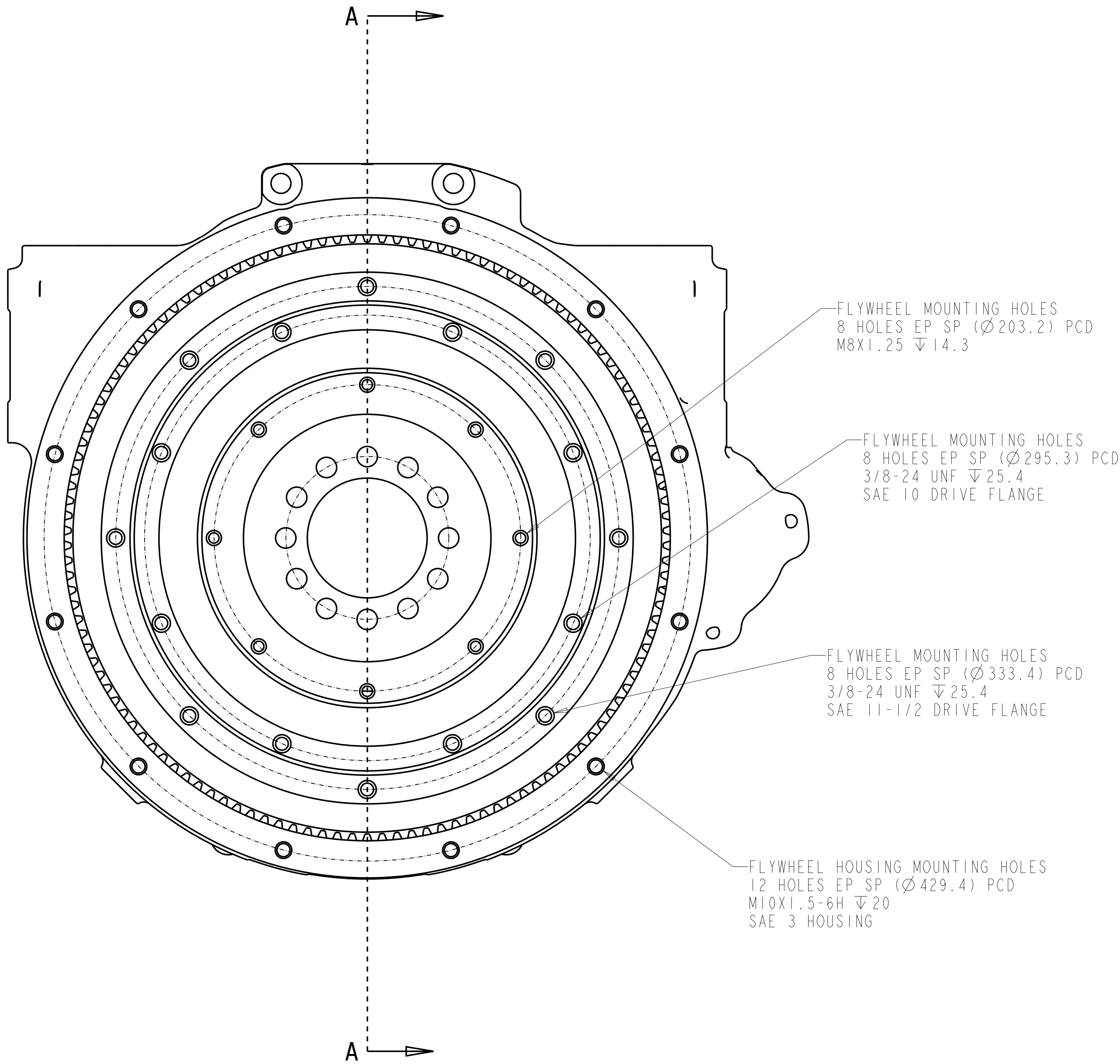
FRONT VIEW



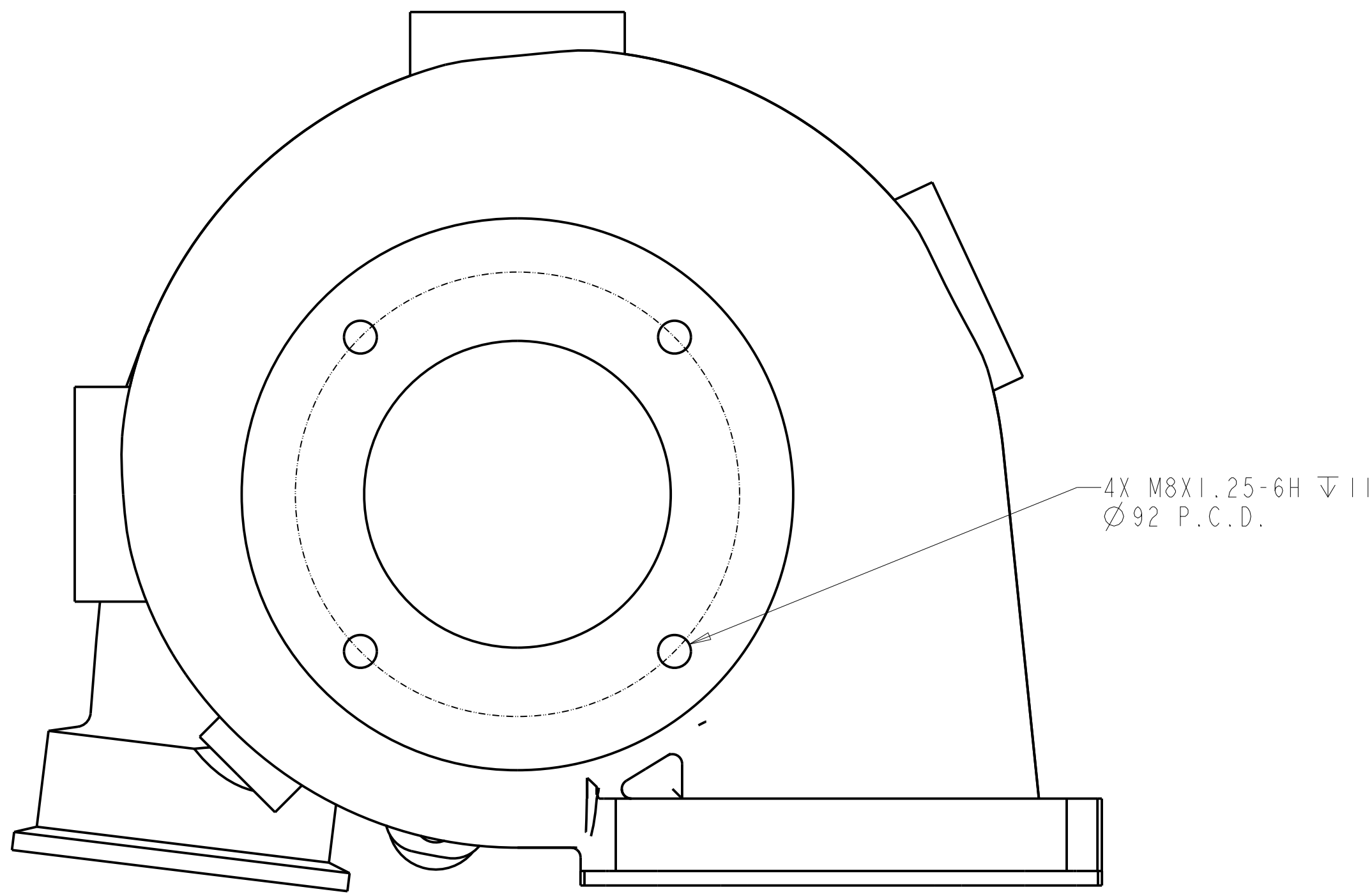
SECTION A-A

LEFT SIDE VIEW

FLYWHEEL & HOUSING VIEW



REAR VIEW



EXHAUST OUTLET VIEW

FOR NOTES SEE SHEET 1

D.WOOD		00	M.BLEAKLEY	23.10.23		E44
CHECKED BY	DATE	ISSUE	DESIGNER	DATE	JOB NO	ENGINE

Perkins Perkins Engines Company Limited		INSTALLATION-ENG E44 HEX T	
ALL RIGHTS RESERVED THIS DOCUMENT CONTAINS CONFIDENTIAL INFORMATION WHICH MUST NOT BE COPIED WHOLLY OR IN PART, NOR DISCLOSED TO ANY PERSON WITHOUT OUR PRIOR AUTHORITY IN WRITING. © PERKINS ENGINES COMPANY LIMITED		SCHEME No	6468386
AO	THIRD ANGLE	Pro/ENGINEER	Scale : 1:2 Sheet : 2 of 2